



Woods House, 7 Gatliff Road  
London SW1W

GARTON JONES.COM



# Woods House, 7 Gatliff Road London, SW1W

## £500,000

A one DOUBLE BEDROOM apartment available for SALE of approx. 498sq.ft (46.3sqm) on the 3rd floor of Woods House, on GROSVENOR WATERSIDE development in Chelsea. There is an OPEN PLAN reception room with a Juliette style balcony, a smart kitchen, a bathroom and storage including built in wardrobes to the bedroom. There is an on-site Sainsbury's Local, coffee shop and private kids' club. SLOANE SQUARE and VICTORIA station with access to Gatwick Express trains are within walking distance. Available via Garton Jones' on-site office at Grosvenor Waterside (underneath Bramah House).

OR available to purchase 25% share + rent £705.11 per month on the 75% share + Service Charge £255.58pm + Heating £9.20 & Water £12.71

EWS1 completed  
Leasehold 125 years from 2003  
Service Charge pa £3,329.88

EPC certificate available on request.

- 498sq.ft (46.3sqm)
- One Double Bedroom
- Open Plan Reception Room
- Fitted Kitchen
- Modern Bathroom
- 24 Hour Concierge
- Juliette Style Balcony
- On-Site Sainsbury's, Creche, Coffee Shop And Purple Dragon Private Kids' Club
- Walking Distance to Sloane Square & Victoria Station
- 25% Share Also Available At £125,000 Plus Rent

## GARTON JONES.COM

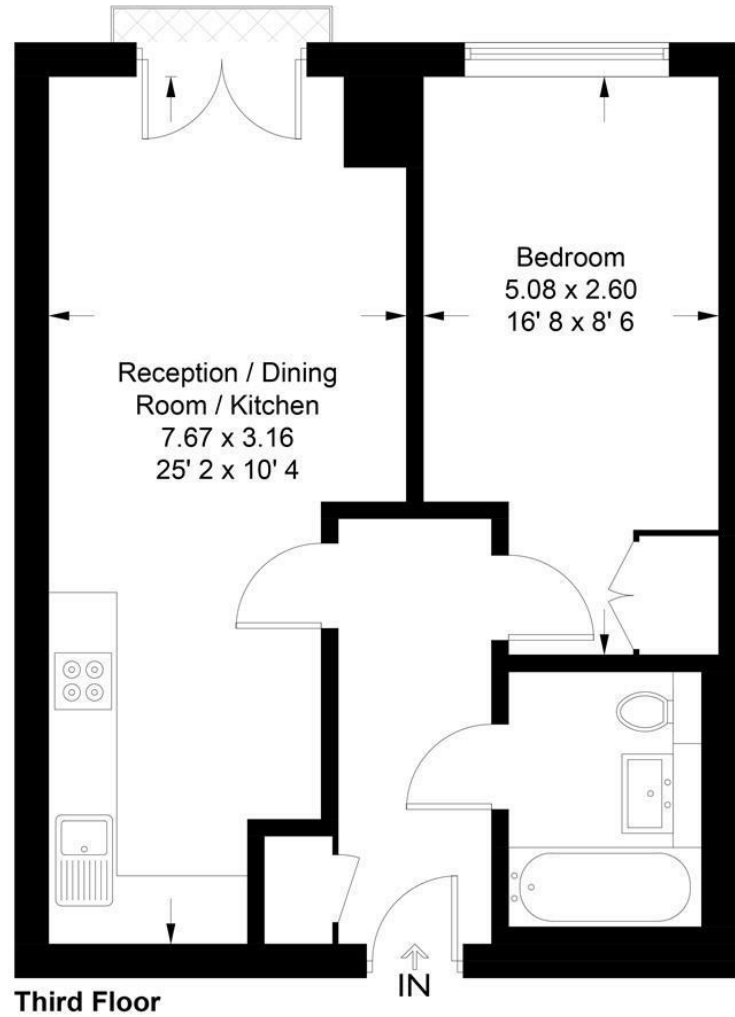
8 Gatliff Road  
Chelsea  
London  
SW1W 8DP

Sales +44 (0) 20 7730 5007  
gws@gartonjones.com  
www.gartonjones.com



**Woods House**

Approximate Gross Internal Area = 505 sq ft / 46.9 sq m



Not to scale, for guidance only and must not be relied upon as a statement of fact  
All measurements and areas are approximate only and have been prepared in  
accordance with the current edition of the RICS Code of Measuring Practice



GARTON JONES.COM

